



D300

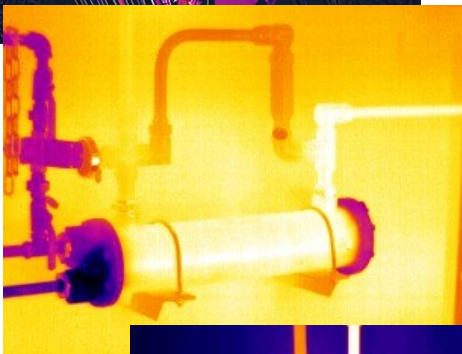
Mid Level Thermal Camera

SATIR D300 has been designed with the user in mind to ensure that it is simple to use while delivering a high quality image with a 384x288 resolution.

The D300 comes with a laser ranging feature which allows the user to point the laser to the target and it automatically focus the image.

The D300 comes with Duo Vision Plus and a touch screen LCD 640 x 480 pixels with 16GB storage media

Duo Vision Plus add additional clarity to the thermal image by using a digital overlay. Duo Vision Plus also works well with it's touch screen that will auto focus to ensure the user has a clearly focused thermal image. This means when generating a report the image is already focused which enables accurate evaluation.



Key Features

- UFPA (uncooled microbolometer focal pane array)
- Thermal, Picture in Picture / Merge, Digital / Visual
- Laser Ranging Distance Metre
- Wi-Fi, Bluetooth, USB 2.0, Type C, Display Port
- Motorised, Auto, Manual Lens Focus
- Software Analysis Wizard/Report License
- 8 Hours of Battery Life

D300 Specifications

Image Performance	
Detector Resolution	384x288
Thermal Sensitivity (N.E.T.D)	≤0.03°C@30°C
Spatial Resolution	1.09mrad
Field of View (F.O.V)	24°x18°
Spectral range	7.5~14μm
Focus Mechanism	Manual/Motorised/Auto
Measurement	
Temperature Range	-20°C ~ + 650°C, up to +1000°C (Optional)
Accuracy	±2°C or ± 2% of readings
Image Presentation	
Image Mode	Standard JPEG, measurement data included, IR mode
Visible Pixels	HD 5MP Digital Camera
LCD Display	3.5" Capacitive Touch Screen
Frame Rate	50Hz / 60 Hz
Digital Zoom	1x to 10x, continuous
Colour Palettes	8 Colour Palettes
Measurement Tools	Measurement tools 10 moveable spot, 5 areas box, centre spot, isotherm, 1 line
Alarm	Alarm Yes, auto (above, below, equal)
File Format (Thermal/Visual)	JPEG
Laser	
Laser Type	Class 2, 1mW/635nm, red
Laser Ranging	Yes—Auto focus the camera
Measurement Range	0.05m—30m
Environmental	
Encapsulation	IP54
Shock/Vibration Resistance	25G/2G
Operating Temperature	-20°C ~ +50°C
Physical Characteristics (Camera Body)	
Weight	0.85KG
Dimensions	232mm×115mm×168mm
Additional Features	
Battery	Battery Rechargeable Lithium Battery, and 1 extra Unit battery
Battery Life	8 Hours
Charging	In camera (AC Adapter or 12 V from a vehicle)
Video Record	Yes
Extra Feature	Capable Charge in Deive/Power Bank 10,000 mAh
Bluetooth	Yes
Real time transmission	USB real time transmission with temperature data (optional)

Please be aware specifications can vary from time to time